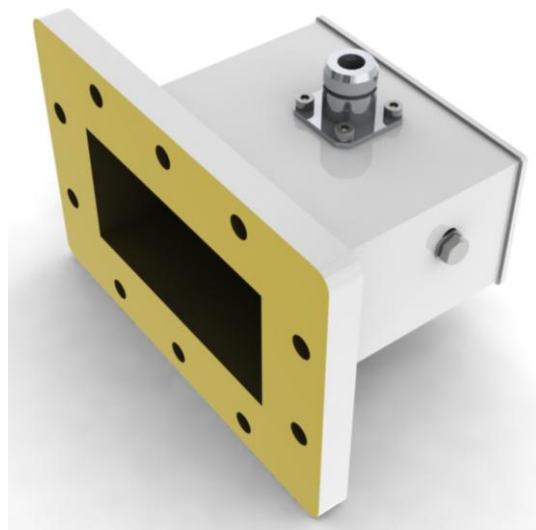


TRANSITION WR340 TO COAXIAL ADAPTOR REF. TGCP WR340RN P1A

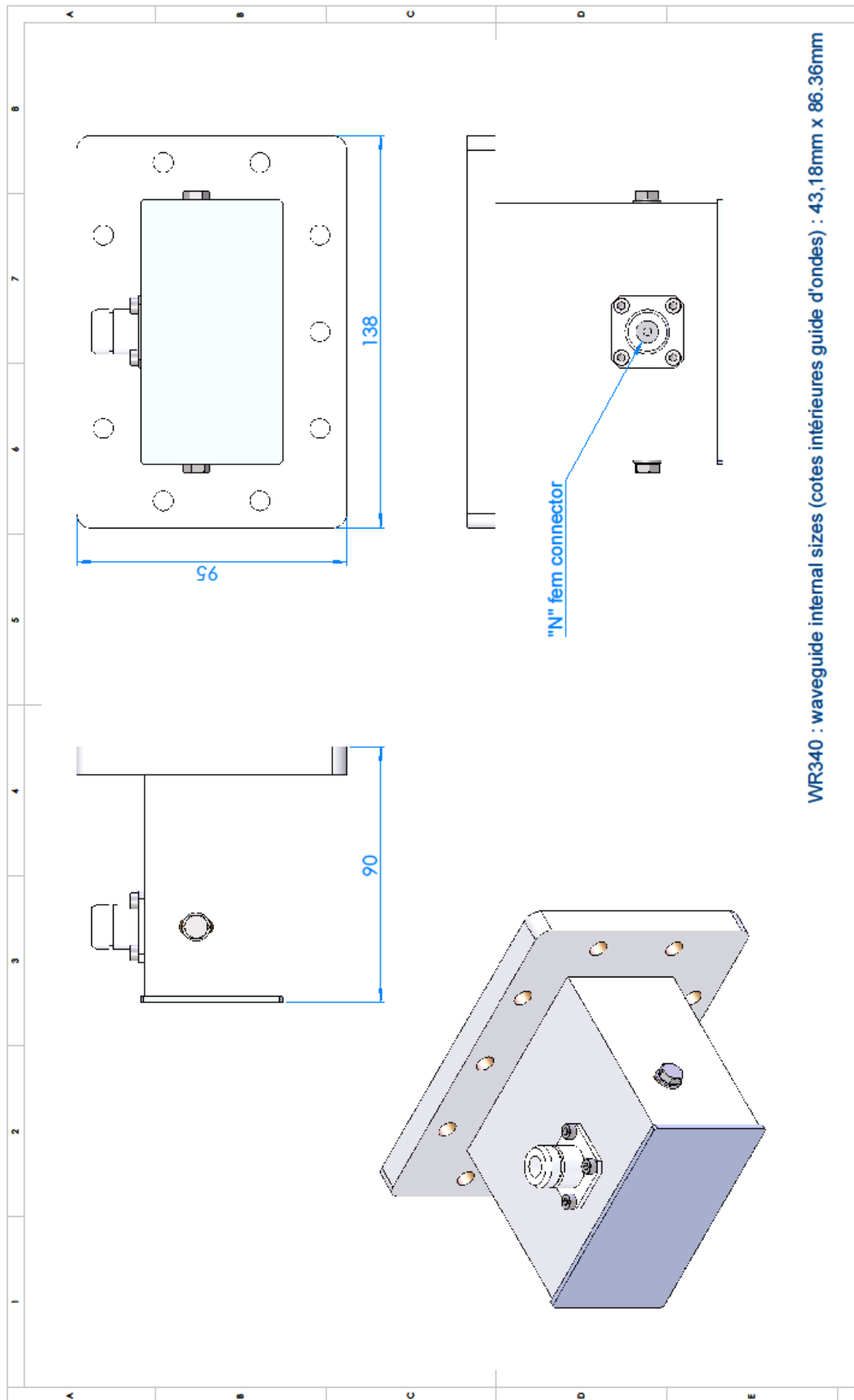


The role of the TGCP WR340RN P1A transition (adaptor) is to transfer the microwave signal from a WR340 waveguide to a coaxial applicator or from a coaxial signal to a WR340 structure. This adaptor has been developed for laboratory and industrial applications up to 300 W at 2450 MHz.

The integrated crossbar design allows for an optimized response over a wide frequency band as well as the dissipation of heat from the core of the coaxial cable.

The adaptor is tuned for working with a WR340 applicator if the microwave energy is provided from a coaxial exit (for example, Sairem's solid state microwave generator GMS200W) or vice versa.

REF	TGCP WR340RN P1A
Frequency	2450 MHz +/- 50 MHz
Maximum power	300 W (54.8 dBm) in continuous wave (CW) 600 W pick power, average power 300 W
SWR	< 1,09 (<-27 dB) between 2425 and 2475 MHz
Waveguide connexion	WR340 standard flange
Coaxial connexion	N-type female
Materials	Brass, epoxy white paint
Size / Weight	See drawings / 1.25 kg



MATERIE :		TRATEMENT :		REPRODUCTION INTERDITE - DROITS RESERVES		TITRE WR340 / N 2450MHz guide/coax transition	
INDICE		DATE		VERIFIE		DESIGNNO. 3186-ENS B	
A		10/09		JMJ		INDEX DE DOCUMENT	
DESINE		APPROUVE		MODIFICATION DU DESSIN		FORMAT: A3	
ECHAPE		ECHAPE		ECHAPE		ECHAPE: 1:1	
PESANT		PESANT		PESANT		WEIGHT:	
SAIREM		SAIREM		SAIREM		SAIREM	
12 porte du GRAND LYON		12 porte du GRAND LYON		12 porte du GRAND LYON		12 porte du GRAND LYON	
FRANCE		FRANCE		FRANCE		FRANCE	
M: 04 72 01 81 60		M: 04 72 01 81 60		M: 04 72 01 81 79		M: 04 72 01 81 79	