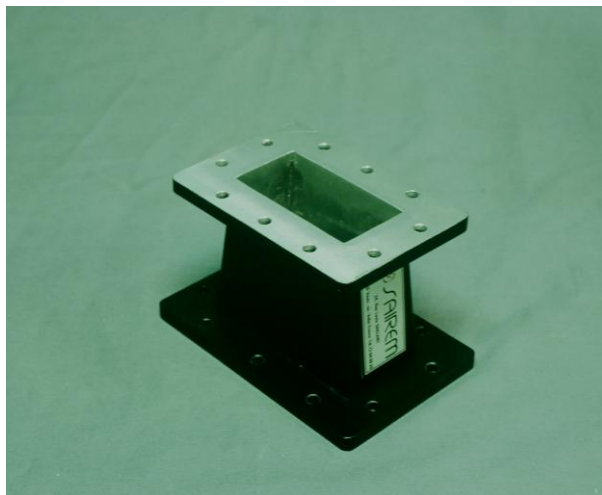


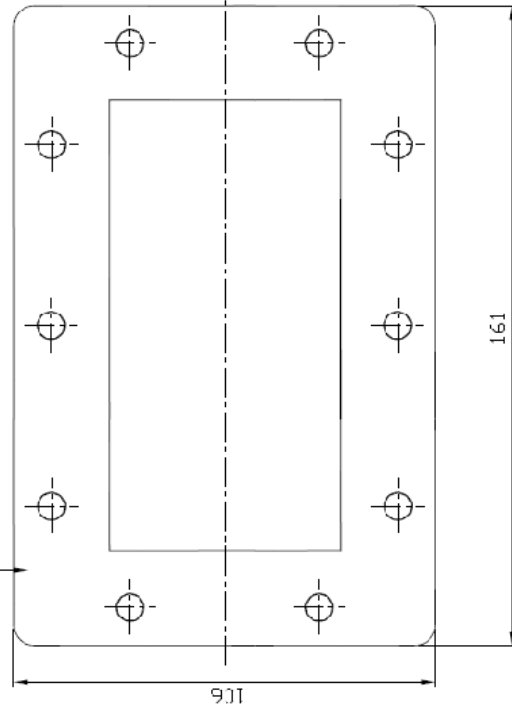


WR340 to WR430 WAVEGUIDE TRANSITION
Ref. TRANS WR430/WR340 R/R

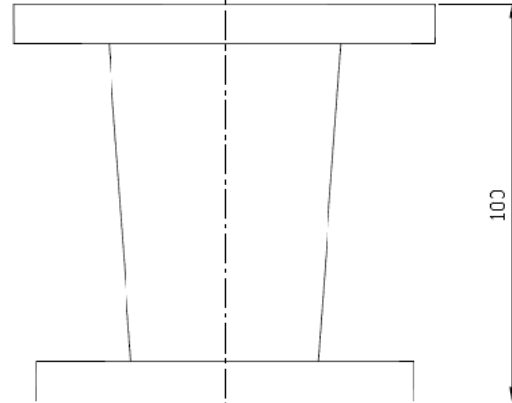
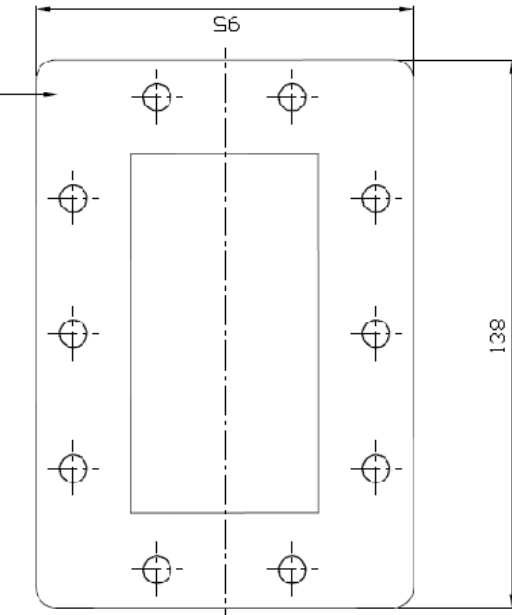


REF	TRANS WR430/WR340 R/R
Frequency	2450 MHz +/- 25 MHz
Maximum power	15 kW
Flange WR340	Rectangular
Flange WR430	Rectangular
Material	Aluminium, epoxy painted externally
Standard (minimum) length	See drawings below

BRIDE STANDARD POUR GUIDE WR430



BRIDE STANDARD POUR GUIDE WR340



MATIERE :	INOX//LAIION//ALUMINUM	TREITEMENT :	REPRODUCTION INTERDITE - DROITS RESERVES	TRANSITION G.JIDF WR430-WR340/R22-R26 RC104U RC112/WC8 WC9A	CLIENT	STANDARD
INDICE	21/12/95	LOPEZ M	FCHEFIF: 1	N° 160-0 ENS		
DATE	DSSHE	VERPPE	EMISSIION ORIGINALE			
		APPROUVE	MODIFICATION DU DESSIN			

