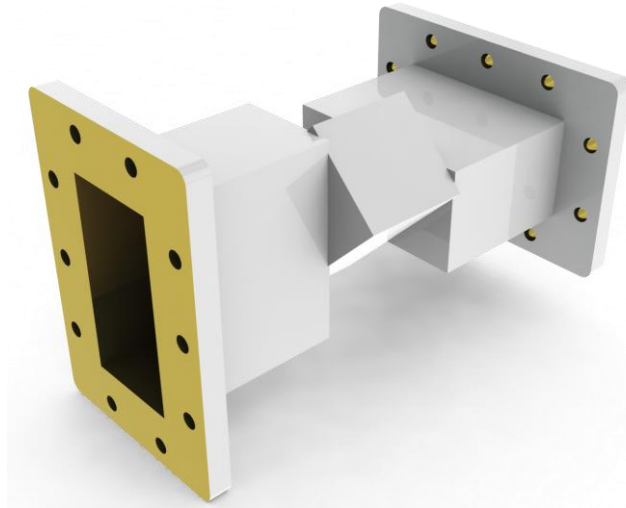


## WR340 WAVEGUIDE TWIST

### Ref .TWISTWR340

The WR340 waveguide twist allows changing the direction of the waveguide port and for polarization purpose.



<b>Ref.</b>	<b>TWISTWR340</b>
Frequency range	2450 MHz $\pm$ 25 MHz
Max. rated power	6 kW
Angle	90 °
VSWR	< 1.10
Sortie	Sur bride UG 553 A/U de guide RG 112/U (WR340)
Outside finish	Anticorrosive white paint
Material	Brass
Weight	1.8 kg

