

DC POWER SUPPLY FOR PLASMA 1500 W

Ref. ALP 1500

MK176EN-A

This DC power supply has been designed for **plasma magnetron sputtering**. The integrated switch-mode technology allows a **power efficiency above 90 %**.



- Precise control of power, current and voltage
- Plasma ignition
- Perfectly adapted for small scale magnetron sputtering systems
- Integrated fast switch: 4 targets can be biased sequentially
- Easy control via front panel or Analog Interface

MAIN APPLICATION

PLASMA APPLICATION

- Magnetron sputtering

KEY BENEFITS

DESIGN

- Small footprint (19 "rack 2U)

TECHNOLOGY

- Arc detection and removal algorithm
- Plasma ignition (sawtooth function)
- Programmable ramp



Microwave and Radio Frequency Professional Solutions

DC POWER SUPPLY FOR PLASMA

1500 W

Ref. ALP 1500

MK176EN-A

KEY SPECIFICATIONS

| | |
|---------------------|---|
| Reference | • ALP 1500 |
| Main function | • Direct current power supply for plasma |
| Power supply | • Switch-mode power supply ($\eta > 90\%$) |
| Output power | • Power, current and voltage can be controlled independently <ul style="list-style-type: none">○ Power: up to 1500 W○ Voltage: 200 V to 1000 V○ Current: 30 mA to 2 A |
| Ignition voltage | • 4 m long connection cable. Other lengths available upon request |
| Power stability | • $> 120\text{ V}$ |
| Ripple | • $< 1\%$ from 10 % to 100 % of the available maximum power |
| High voltage output | • $< 2\%$ RMS from 10 % to 100 % of the available maximum power |
| Mains | • Female connector SHV |
| Regulation mode | • 208 – 230 V $\pm 6\%$, 1-phase + neutral |
| Local control mode | • Voltage / current / power |
| Remote control mode | • Front panel |
| Dimensions | • RS232 SAIREM protocol, Analog |
| Cooling | • 440 × 465 × 88,8 mm (2U) |
| Safety | • Air |
| EC standards | • Safety relay and free contact, to be connected to site safety circuit or shunted) |
| | • EN 61010-10; EN 61000-6-4; EN 61000-6-2 |



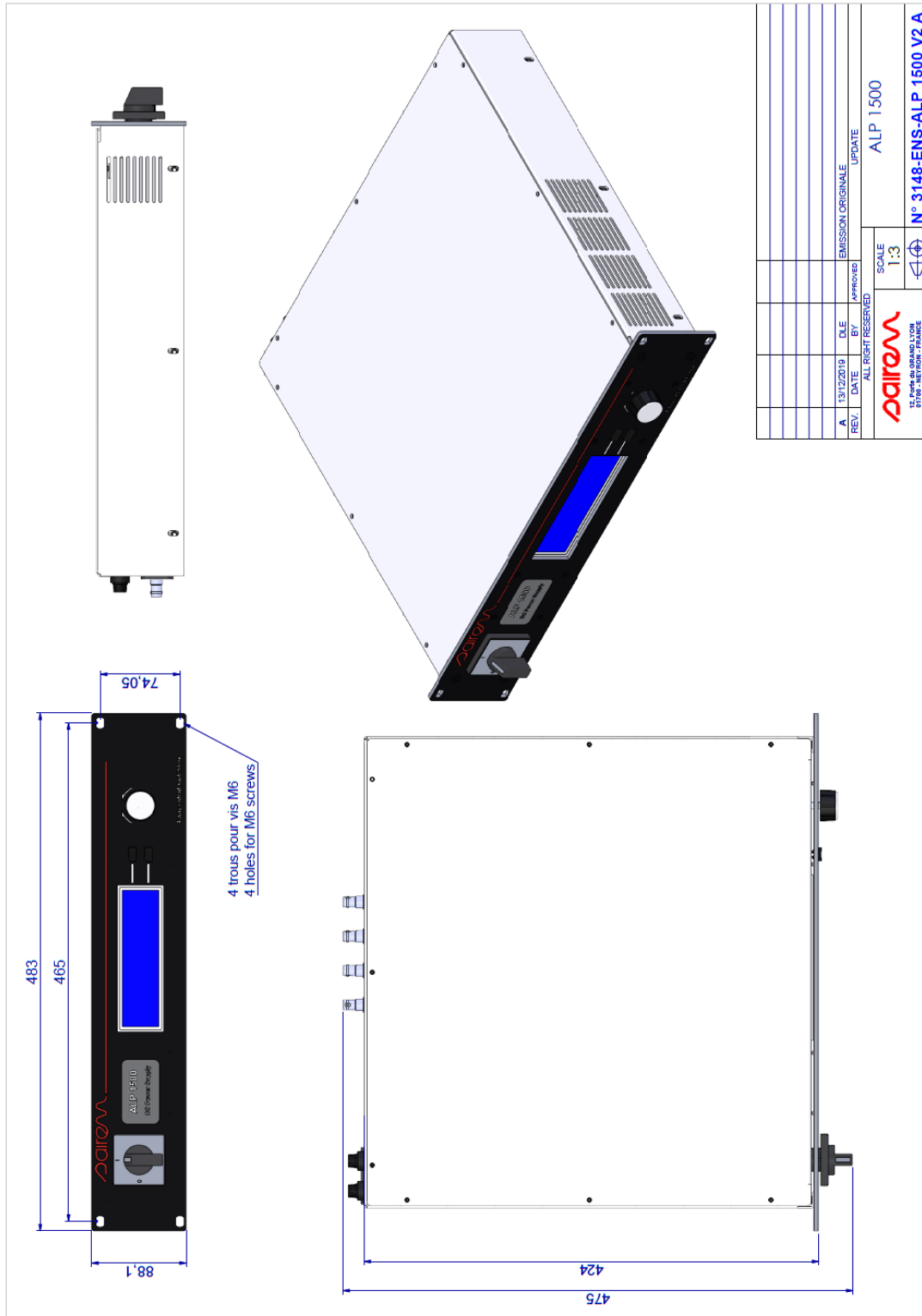
Microwave and Radio Frequency Professional Solutions

DC POWER SUPPLY FOR PLASMA 1500 W

Ref. ALP 1500

MK176EN-A

MAIN DIMENSIONS



Microwave and Radio Frequency Professional Solutions