

DC POWER SUPPLY FOR PLASMA

750 W

Ref. ALP 750

MK174EN-A

This DC power supply has been designed for **plasma magnetron sputtering**. The integrated switch-mode technology allows a **power efficiency above 90 %**.



- Precise control of power, current and voltage
- Plasma ignition
- Perfectly adapted for small scale magnetron sputtering systems
- Integrated fast switch: 4 targets can be biased sequentially
- Easy control via front panel or Analog Interface

MAIN APPLICATION

PLASMA APPLICATION

- Magnetron sputtering

KEY BENEFITS

DESIGN

- Small footprint (19 "rack 2U)

TECHNOLOGY

- Arc detection and removal algorithm
- Plasma ignition (sawtooth function)
- Programmable ramp



Microwave and Radio Frequency Professional Solutions

DC POWER SUPPLY FOR PLASMA

750 W

Ref. ALP 750

MK174EN-A

KEY SPECIFICATIONS

Reference	• ALP 750
Main function	• Direct current power supply for plasma
Power supply	• Switch-mode power supply ($\eta > 90\%$)
Output power	• Power, current and voltage can be controlled independently <ul style="list-style-type: none">○ Power: up to 750 W○ Voltage: 200 V to 1000 V○ Current: 30 mA to 1 A
Ignition voltage	• 4 m long connection cable. Other lengths available upon request
Power stability	• 950 V
Ripple	• $< 1\%$ from 10 % to 100 % of the available maximum power
High voltage output	• $< 2\%$ RMS from 10 % to 100 % of the available maximum power
Mains	• Female connector SHV
Regulation mode	• 208 – 230 V $\pm 6\%$, 1-phase + neutral
Local control mode	• Voltage / current / power
Remote control mode	• Front panel
Dimensions	• RS232 SAIREM protocol, Analog
Cooling	• 440 × 465 × 88,8 mm (2U)
Safety	• Air
EC standards	• Safety relay and free contact, to be connected to site safety circuit or shunted)
	• EN 61010-10; EN 61000-6-4; EN 61000-6-2



Microwave and Radio Frequency Professional Solutions

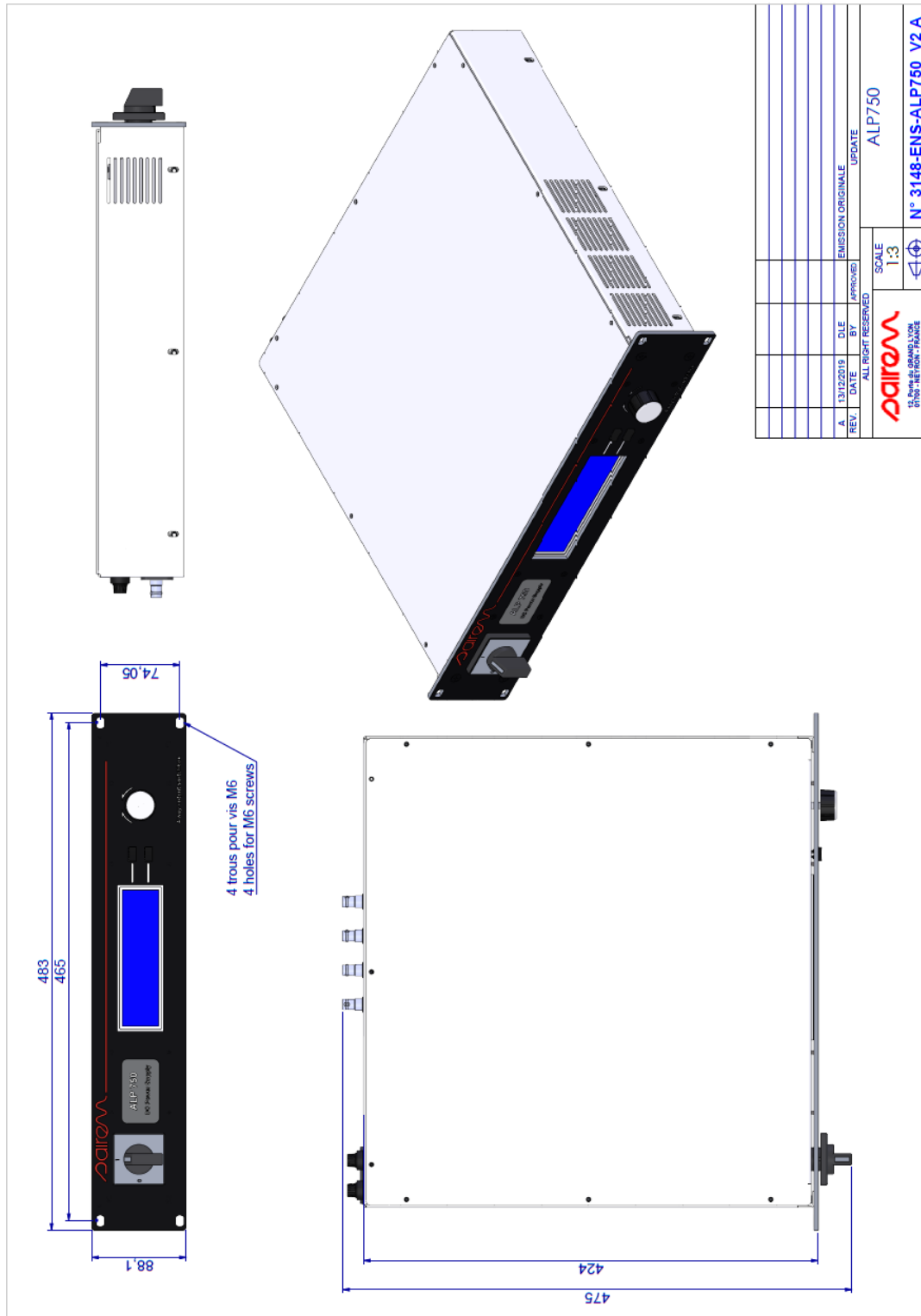
DC POWER SUPPLY FOR PLASMA

750 W

Ref. ALP 750

MK174EN-A

MAIN DIMENSIONS



Microwave and Radio Frequency Professional Solutions