

915 MHz MICROWAVE GENERATOR

MAXIMUM OUTPUT POWER 75 OR 100 kW

Ref. GLP750 / GLP1000 KI

MK147EN-B

SAIREM's GLP range of microwave generators provide continuous wave (CW) output power adjustable from 7,5 to 75 kW or 10 to 100 kW.

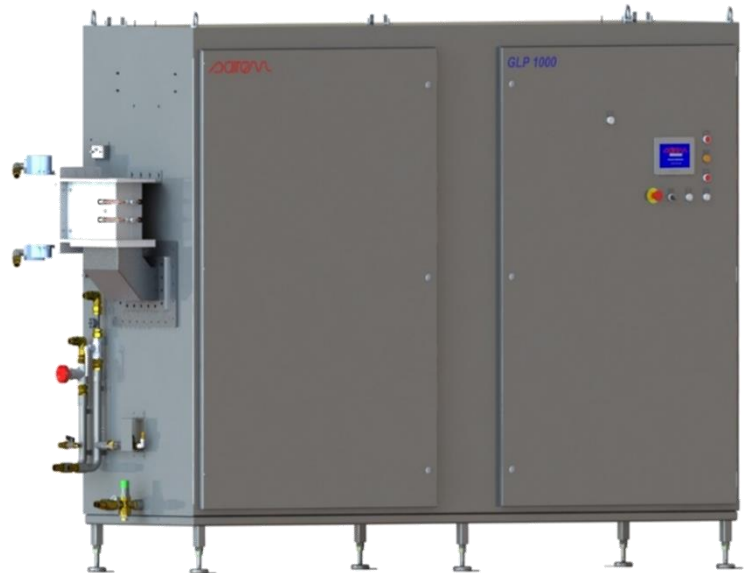
High reliability for your applications:

- **Stable** power output
- **Heavy duty** design
- **Extended** magnetron lifetime (with optional isolator)

The GLP is a continuous wave microwave generator composed of a single cabinet with a power supply and a magnetron. For a better efficiency, a PLC controller drives simultaneously the magnetron anodic power, electromagnet field and filament current.

The result is a very low power setting possibility (7,5 kW), maximum efficiency, and increased magnetron life time.

Full water cooling (no air cooling) to function in **dusty, wet, and warm environment**. Can be installed in closed space



MAIN APPLICATIONS

FOOD APPLICATION

- Tempering / defrosting
- Drying
- Heating
- Cooking
- Pasteurizing

INDUSTRIAL APPLICATIONS

- Industrial heating: liquids, essential oils, wood, rubbers, thermoplastics, biomass ...
- Industrial drying: ceramics, powders, soil decontamination ...



Microwave and Radio Frequency Professional Solutions

915 MHz MICROWAVE GENERATOR

MAXIMUM OUTPUT POWER 75 OR 100 kW

Ref. GLP750 / GLP1000 KI

MK147EN-B

KEY BENEFITS

COMPACT DESIGN

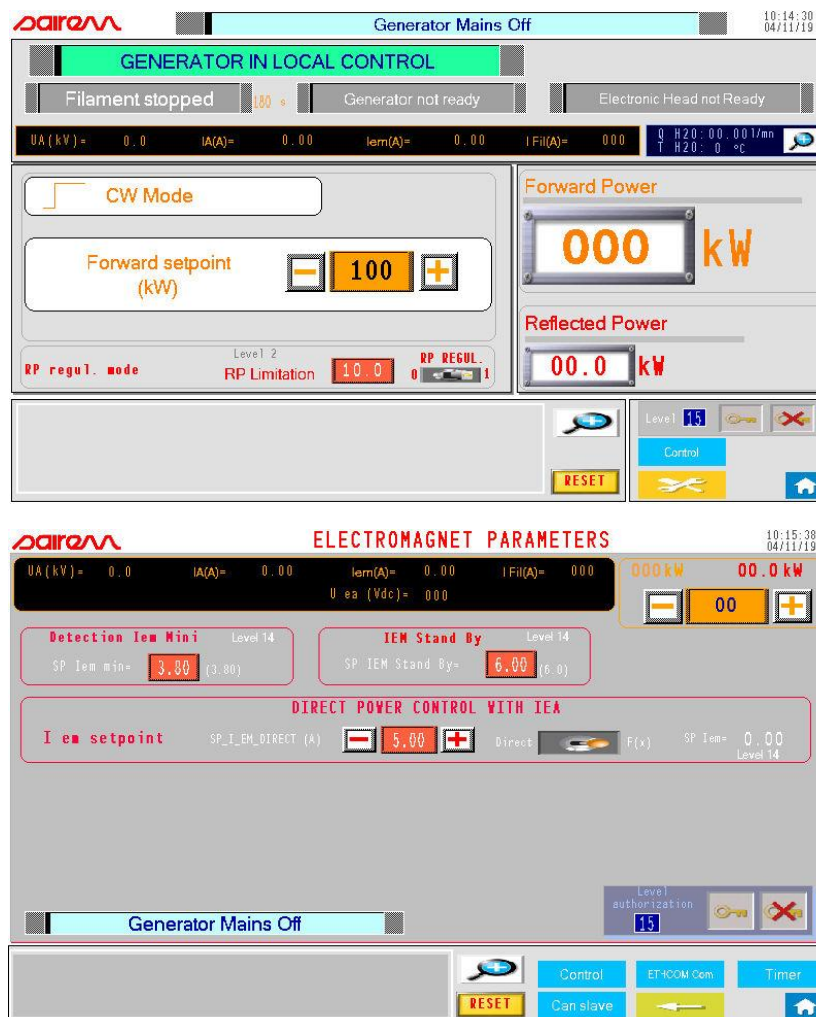
- All-in-one design: controls, power supply, microwave generator, isolator, in the same cabinet
- Stainless steel 304L, air-tight construction

HIGH RELIABILITY

- Smart controls that allow maximum efficiency and extended magnetron lifetime
- IP54 protection for installation in hot and wet environments
- Heavy duty and affordable

CONTROLS

- All operational parameters and faults are available on the color touch screen



Microwave and Radio Frequency Professional Solutions

915 MHz MICROWAVE GENERATOR

MAXIMUM OUTPUT POWER 75 OR 100 kW

Ref. GLP750 / GLP1000 KI

MK147EN-B

KEY SPECIFICATIONS

Reference	GLP750KI	GLP100KI
Output Power	Adjustable from 7.5 to 75 kW in continuous wave or controlled pulsed mode	Adjustable from 10 to 100 kW in continuous wave or controlled pulsed mode
Power Supply	Electro-magnet power supply with 3-phase transformer and filament power supply controlled by PLC. Air / water exchanger integrated	
Transformer	Yes	
Frequency	915 MHz \pm 10 MHz or 896 MHz \pm 10 MHz (to be specified) Central frequency is imposed by the magnetron	
HMI Display	7" colour touch screen, all controls & functions accessible, PRO-FACE PLC, fault history... Position of display cabinet adjustable (top side on the picture)	
Ripple (RMS)	2 % between 15 and 75 kW ripple \pm 5 % at full output power	2 % between 20 and 100 kW ripple \pm 5 % at full output power
Consumption	100 kVA at full power	133 kVA at full power
Operating Mode	Continuous wave, ramp, timer	
Reflected power protection	Protection against 100 % RP	
Max continuous Reflected Power	Integrated isolator, SWR = ∞ any phase, 25 kW RP (reflected power) by forward power limitation or stop by fault (software choice)	Integrated isolator, SWR = ∞ any phase, 30 kW RP (reflected power) by forward power limitation or stop by fault (software choice)
Remote Control	Analogue or Ethernet Modbus (Profibus, CanOpen optional)	
Mains	380/415 V, 50 Hz or 60 Hz, 3 phases + earth	
Cooling & Operation requirements	50 L/min @ 4 bar differential pressure (for max. 15 kW RP dissipated heat), water temperature (18 °C to 23 °C) monitored, each water flow circuit monitored, max. inlet pressure 6 bars. Cooling capacity requirement at full power and maximum reflected power: 40 kW	75 L/min @ 4 bar differential pressure (for max. 15 kW RP dissipated heat), water temperature (18 °C to 23 °C) monitored, each water flow circuit monitored, max. pressure 6 bars. Cooling capacity requirement at full power and maximum reflected power: 50 kW
Microwave Output	WR975, flange CPR 975	
Cabinet	Stainless steel 304L	
Dimensions	2029 x 2578 x 837 mm (H x W x D)	2129 x 3078 x 938 mm (H x W x D)
Weight	1200 kg	1600 kg
Protection	IP 55	
Safety	Interlock, safety relay, emergency stop...	



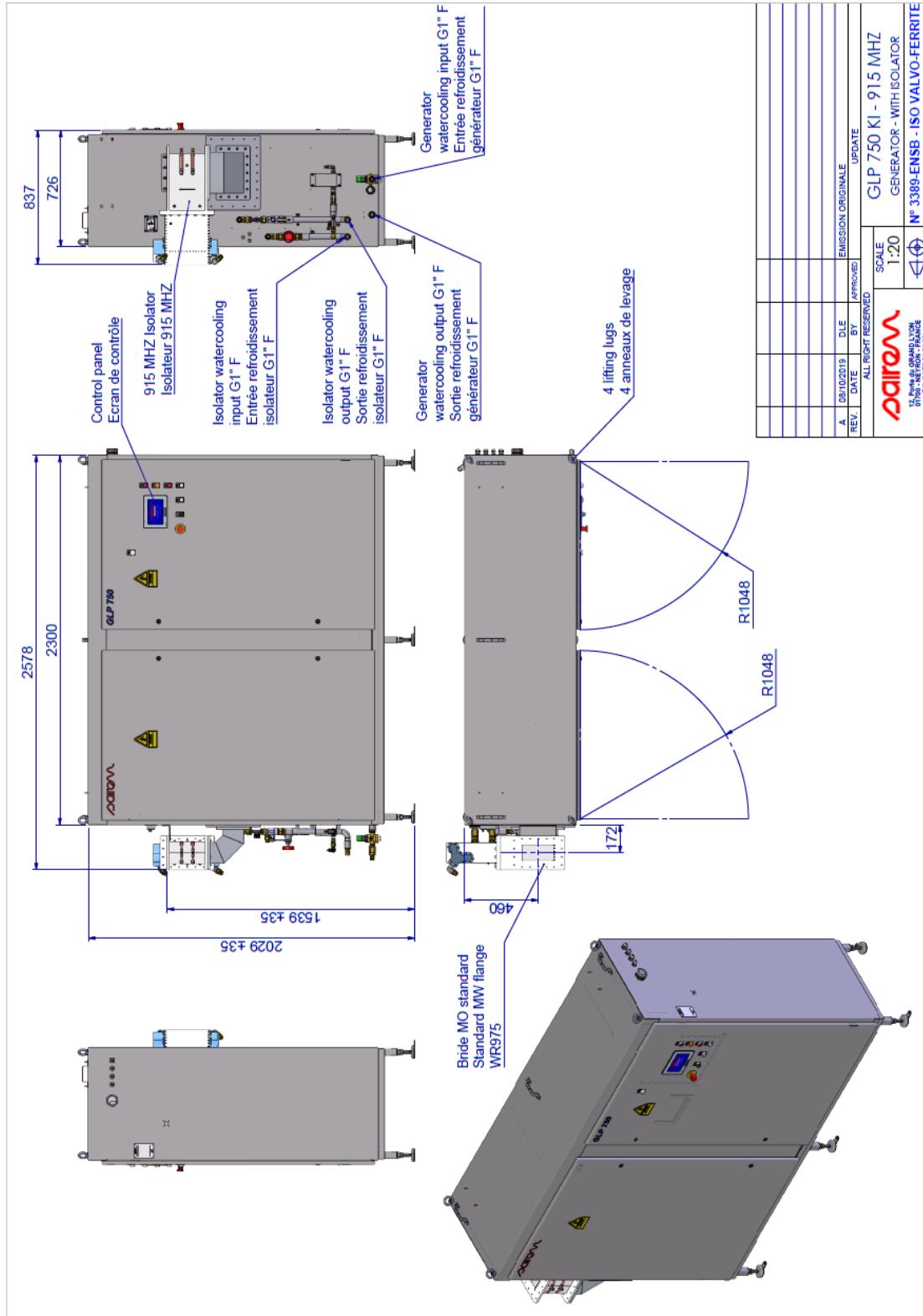
Microwave and Radio Frequency Professional Solutions

915 MHz MICROWAVE GENERATOR

MAXIMUM OUTPUT POWER 75 OR 100 kW

Ref. GLP750 / GLP1000 KI

MK147EN-B



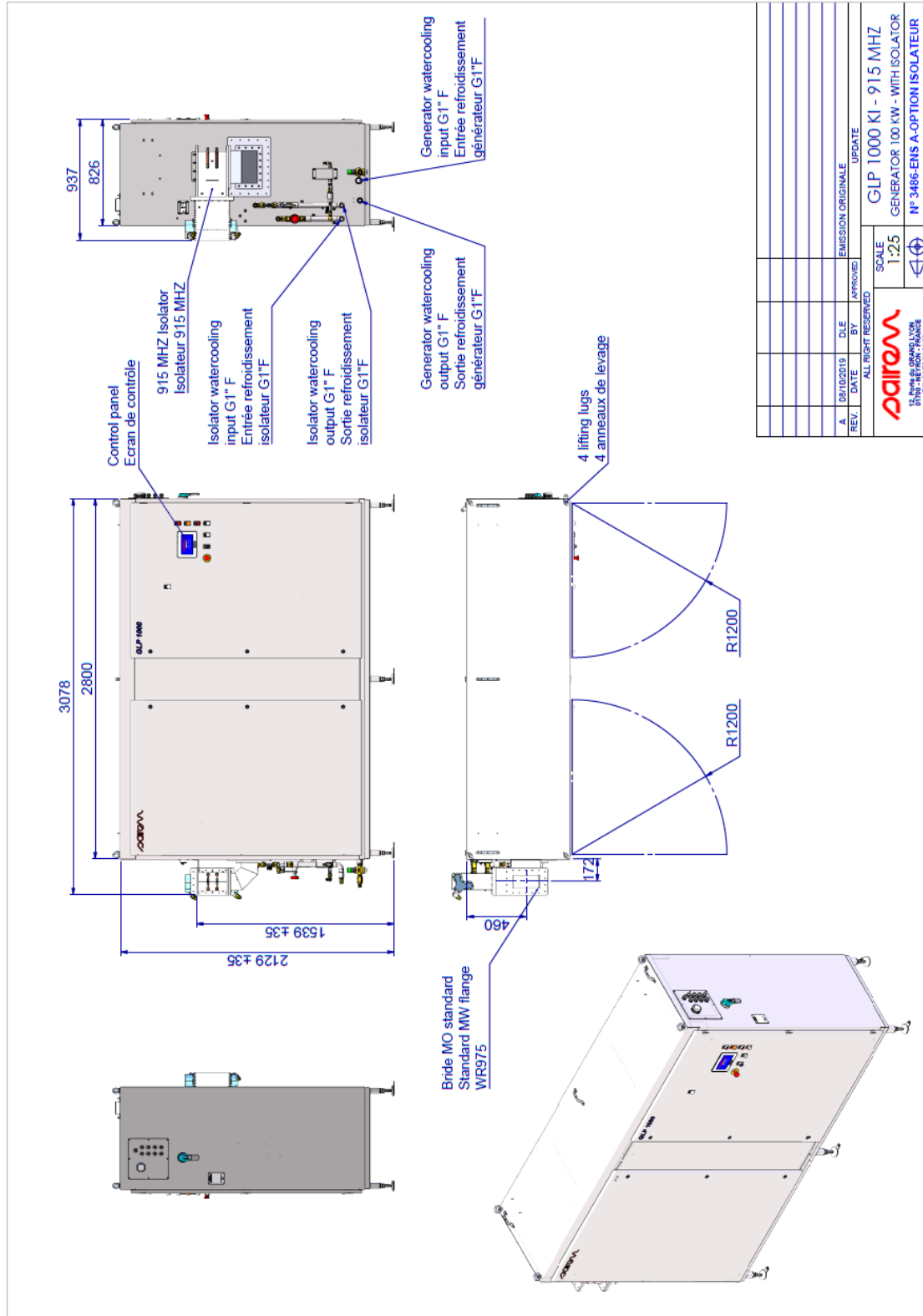
Microwave and Radio Frequency Professional Solutions

915 MHz MICROWAVE GENERATOR

MAXIMUM OUTPUT POWER 75 OR 100 kW

Ref. GLP750 / GLP1000 KI

MK147EN-B



Microwave and Radio Frequency Professional Solutions